

ESF-21

MILITARY SUPPORT

CONTENTS	PAGE
I. PURPOSE	ESF 21.1
II. SITUATIONS AND ASSUMPTIONS	ESF 21.1
A. Situations	ESF 21.1
B. Assumptions	ESF 21.1
III. CONCEPT OF OPERATIONS	ESF 21.1
A. General	ESF 21.1
B. Operational Time Frames	ESF 21.2
IV. ORGANIZATION AND ASSIGNMENT RESPONSIBILITIES	ESF 21.3
A. Primary Agencies	ESF 21.3
C. State Support Agencies	ESF 21.4
D. Federal Support Agencies	ESF 21.4
V. DIRECTION AND CONTROL	ESF 21.4
VI. CONTINUITY OF OPERATIONS	ESF 21.5
VII. ADMINISTRATION AND LOGISTICS	ESF 21.5
VIII. ESF DEVELOPMENT AND MAINTENANCE	ESF 21.5
APPENDICES	
1. Activation List	ESF 21.7
2. Organizational Chart	ESF 21.8
3. Missouri National Guard Assets List	ESF 21.9
4. Missouri Wing Civil Air Patrol Contact Information	ESF 21.11

ESF-21

MILITARY SUPPORT

PRIMARY AGENCIES: Office of Emergency Management

SUPPORT AGENCIES: Missouri Army National Guard/Missouri Air National Guard

I. PURPOSE

The Missouri National Guard has personnel and assets readily available throughout the State that can assist local jurisdictions in responding to a disaster. The purpose of this ESF is to provide guidance to local officials in the coordination of these resources in support of local domestic operation during the response and recovery from a disaster.

II. SITUATIONS AND ASSUMPTIONS

A. Situations

1. Any major disaster, whether natural, technological or terrorism related, may result in substantial damage and/or failure of a jurisdiction's existing infrastructure. Such disasters may also cause significant damage to homes and other inhabited structures resulting in the widespread displacement of people.
2. Local governments will depend on mutual aid and other forms of assistance in order to respond to and recover from the resulting circumstances.

B. Assumptions

1. The Governor will issue an Executive Order as early as feasibly possible authorizing the Adjutant General to call to Active Duty those National Guard personnel and equipment necessary to support the local response and recovery effort.
2. National Guard units from throughout the State will be available for emergency response missions.
3. Once activated, National Guard units may be available within 72 hours.

III. CONCEPT OF OPERATIONS

A. General

1. During a disaster, the Office of Emergency Management (OEM) will coordinate the implementation of this ESF. A representative from the National Guard will be available in the EOC during activation to respond to requests for support submitted under this ESF.
2. After a disaster incident is stabilized and the initial emergency response priorities are fulfilled, requests for assistance will be transitioned to non-military agencies.

3. The scope of Military Support operations is to prioritize all requests for assistance and allocate available resources based upon mission priorities as established by Military Operations Command. Military Support operations include, but are not limited to:

(ESF-1) Transportation: Support with surface and air movement of personnel and equipment.

(ESF-2) Communications: Support with temporary telecommunications equipment and personnel.

(ESF-3) Public Works & Engineering: Support with personnel and equipment to assess damage to structures and clear and remove debris to support emergency operations.

(ESF-4) Fire: Support primarily in non-urban emergency environment with personnel and aviation support. Provide support with personnel and engineering, aviation and medical equipment for rural and urban search and rescue operations.

(ESF-5) Emergency Operations Center (EOC): Provide support as an agency liaison during activations or as needed.

(ESF-6) Mass Care & Companion Animal Sheltering: Support American Red Cross (ARC) with personnel and equipment for food preparation.

(ESF-7) Resource Management: Support with equipment and supplies. Provide operational and logistical management of all major recovery sites within the County.

(ESF-8) Public Health and Medical: Support with medical personnel and equipment. The National Guard will perform well being checks during disasters.

(ESF-12) Energy: Support with emergency power, fuel and operator assistance.

(ESF-13) Law Enforcement & Counter Terrorism: Support with personnel and equipment to assist in law enforcement, site security, and crowd control operations.

(ESF-16) Damage Assessment: Support with aerial reconnaissance of damaged area. Assist with flights for dignitaries and damage assessment teams.

(ESF-18) Food and Water: Support with personnel and equipment in food distribution and water purification and distribution.

(ESF-19) Donations Management: Support the sorting and distribution of donated goods with personnel and equipment.

B. Actions to be Taken by Operational Time Frames

1. Mitigation

- a. Coordinate with National Guard representatives to develop effective emergency operations plans, per the Joint Force Headquarters, Missouri National Guard, Missouri Liaison Officer (LNO) (Handbook, Page 2, Chapter 4, Deployment, b, bullet statement 4).

2. Preparedness

- a. Regularly update local emergency operations plans to include National Guard resources available in support of each of the ESFs.
- b. Regularly meet with National Guard representatives to identify liaisons, discuss current capabilities and availability of resources.
- c. Participate in exercises that include local response agencies as well as the National Guard.
- d. Identify circumstances and scenarios where National Guard assistance can be used effectively.
- e. Maintain training programs and exercises with the National Guard to promote improved working relationships.

3. Response

- a. Once the need has been determined, the Office of Emergency Management will forward the request to the State Emergency Management Agency.
- b. The request will be specific as to the need (i.e., forklifts for donations management warehousing, personnel and vehicles to distribute food and water, heavy equipment—loaders and dozers to clear debris, law enforcement personnel with vehicles to support local police, etc.).
- c. If National Guard resources are indicated, SEMA will forward the request and recommendations to the Governor who will either activate the requested resources or deny activation.
- d. A military liaison will be available in the EOC any time this ESF is activated.
- e. Requests for military resources will be coordinated through the EOC.
- f. Priorities will be reassessed continually in order to address the most critical needs.
- g. Resources that are committed to response operations will be tracked and redeployed as necessary.
- h. Resources will be re-staged as needed.

4. Recovery

- a. Upon request and approval, military support resources will be provided to assist recovery activities for personnel and equipment.
- b. Military support assets will be incrementally withdrawn, as services are either contracted to the civilian sector or local/state agencies regain control utilizing their resources.
- c. Develop recovery and action strategies.

IV. ORGANIZATION AND ASSIGNMENT OF RESPONSIBILITIES

A. Primary Agency:

Office of Emergency Management

1. Chief Elected Official of affected jurisdiction(s) is responsible for requesting activation of Military Support through SEMA to the Governor.
2. Office of Emergency Management is responsible for facilitating request to SEMA.
3. Act as primary point of contact for Military Support and the Department of Defense.
4. Receive mission requests for ESF-21 to support other ESFs and coordinate those requests with the ESF-21 liaison for mission assignments

B. State Support Agencies

Missouri Army National Guard/Missouri Air National Guard

1. Advise the Office of Emergency Management of current availability and capabilities of resources.
2. Staff the EOC on a 24-hour basis, as needed in support of this ESF.
3. Coordinate mission assignments and tasks from EOC officials, then facilitate, validate, and confirm requirements with Direction and Control (**Basic Plan**) and/or SEMA.
4. Mobilize and stage, in and around the disaster area, personnel and equipment as requested, to ensure maximum support of response/recovery effort.
5. Once deployed, evaluate the immediate needs of the affected population as a result of infrastructure loss (communications, transportation, utilities, etc.), also evaluate loss or damage of essential services (food, water, housing, medical, etc.).
6. Provide support to the other ESFs.
7. Assist the process of returning the community infrastructure and services to a status that satisfies the needs of the population.
8. Implement and exercise formal procedures for the coordination of military support activities including incremental withdrawal of support during the transition from response to recovery stage, and finally to the restoration stage.
9. Upon law enforcement request for assistance, provide support for civil disturbance operations.

C. Federal Support Agencies

Department of Defense (DOD)

DOD maintains significant resources (personnel, equipment, and supplies) that may be available to support Federal response to a major disaster or emergency. DOD will normally provide support for federally declared disasters when other resources are unavailable, and only if such support does not interfere with its primary mission or ability to respond to operational contingencies.

Civil Air Patrol (CAP)

1. Provide 24-hour staffing (liaison) upon request from the EOC to SEMA.
2. Provide aerial missions such as reconnaissance to search for victims, damage assessment, or environmental surveys utilizing visual, photographic, digital and video techniques.
3. Provide airborne communications support.
4. Provide radio communications-mobile or fixed locations.
5. Provide airlift (subject to regulatory restrictions).
6. Provide manual labor (e.g. filling sandbags for flood control).
7. Provide ground teams typically used in search and rescue (SAR) missions. Ground teams may be used for house to house health and welfare checks and inventory and damage assessment. Ground teams are prohibited from participating in Counter drug or law enforcement missions.

V. DIRECTION AND CONTROL

The Adjutant General (TAG) of Missouri is ultimately responsible for all National Guard forces in the State. The senior ranking officer assigned to the disaster will be the TAG's representative and will exercise overall command of all military activities. Each responding unit will have a commanding officer that will report to the senior ranking officer.

VI. CONTINUITY OF OPERATIONS

The key purpose of Continuity of Operations planning is to provide a framework for the continued operation of critical functions. When implemented, these plans will determine response, recovery, resumption, and restoration of Department/Agency services.

COOP Plans for the Departments/Agencies present a manageable framework, establish operational procedures to sustain essential activities if normal operations are not feasible, and guide the restoration of the critical functions of the Department/Agencies functions. The plan provides for attaining operational capability within 12 hours and sustaining operations for 30 days or longer in the event of a catastrophic event or an emergency affecting the department.

VII. ADMINISTRATION AND LOGISTICS

A. Administration

1. **Activation of this ESF.** This ESF will be activated as soon as the need for military support has been identified.
Activation will be approved by the Adjunct General located at the State of Emergency Management Agency (SEMA)
2. **Activation of the EOC.** The EOC will be activated continuously while this ESF is activated.

B. Logistics

Military units responding to a disaster will coordinate food and shelter for their personnel.

VIII. ESF DEVELOPMENT AND MAINTENANCE

The Office of Emergency Management in coordination with the National Guard and other agencies referenced in this ESF is responsible for the annual review and update of this ESF.

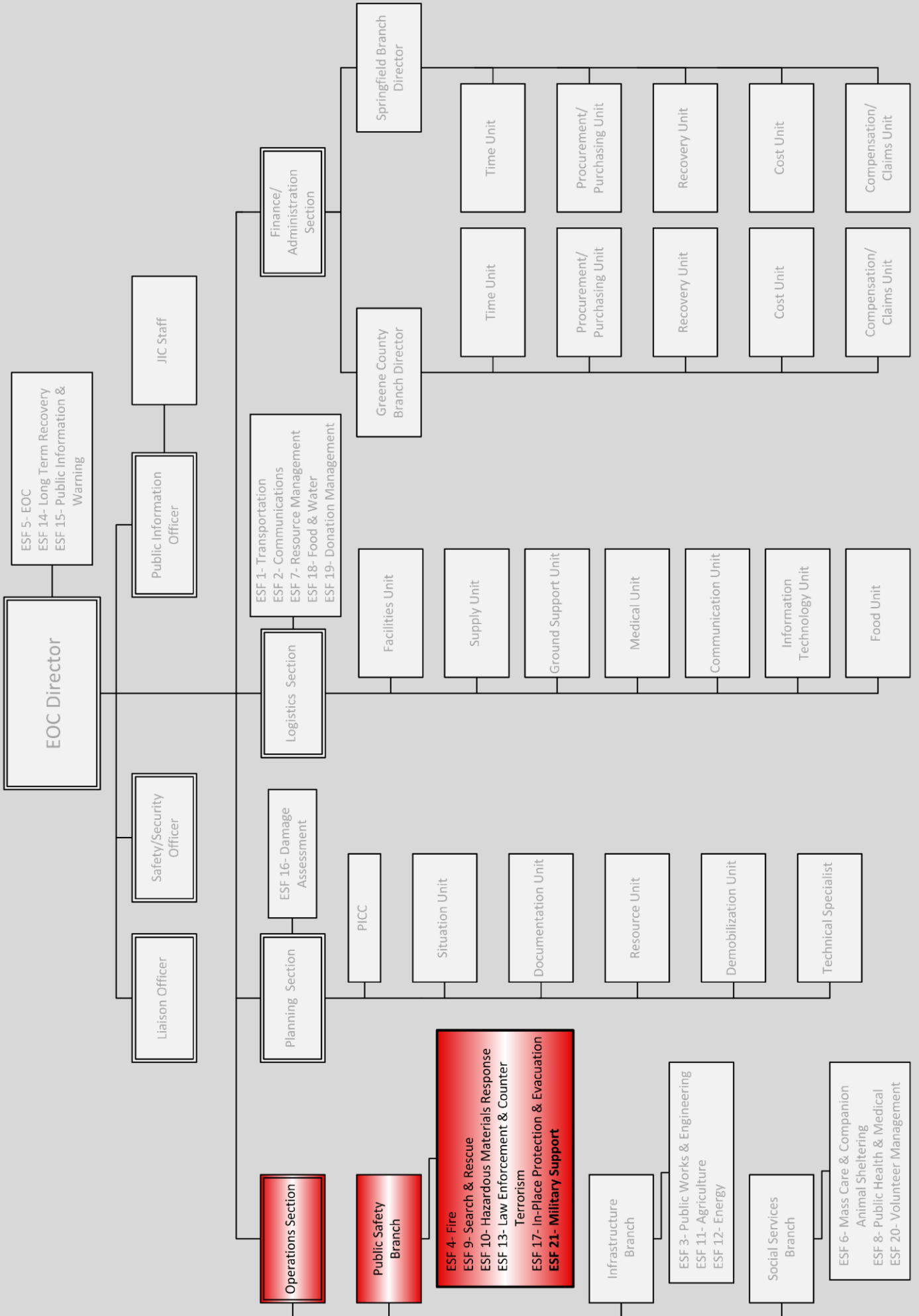
ESF-21
MILITARY SUPPORT
APPENDICIES

<u>CONTENTS</u>	<u>PAGE</u>
APPENDIX 1: Activation List	ESF 21.7
APPENDIX 2: Organizational Chart	ESF 21.8
APPENDIX 3: Missouri National Guard Assets List	ESF 21.9
APPENDIX 4: Missouri Wing Civil Air Patrol Contact Information	ESF 21.11

APPENDIX 1
ACTIVATION LIST

This is a restricted document

APPENDIX 2 ORGANIZATIONAL CHART



APPENDIX 3

MISSOURI NATIONAL GUARD ASSET LIST

Army Guard Assets		
7th Civil Support Team	Jefferson City	WMD First Response Team
CBRNE Emergency Response Force	Jefferson City	WMD decontamination, medical support, security and engineering augmentation
1107 AVCRAD	Springfield	Aircraft maintenance
135 Army Band	Springfield	Musical entertainment
35 Engineering Brigade		
110 Engineer Battalion	Kansas City, Macon, Lexington	Construction, debris removal, earth moving, bridge construction, utility and other engineering support
203 Engineer Battalion	Springfield, Monet, Joplin	
1138 Engineer Battalion	Jefferson Barracks	
1140 Engineer Battalion	Cape Girardeau, Farmington	
1438 Engineer Company	Rolla, Warrington	
220 Engineer Company	Festus	
235 Engineer Detachment	Jefferson City	
135 Field Artillery Brigade		
128 FA Battalion	Columbia, Jeff Barracks, Kirksville, Marshall	Field Artillery
129 FA Battalion	Maryville, Albany, Chillicothe, Independence	
35 Division Aviation Brigade		
1/135 Aviation Battalion	Warrensburg	Apache helicopters, force protection
3/135 Aviation Battalion	Warrensburg	Aircraft maintenance
635 Military Intelligence Battalion	Warrensburg	Intelligence support
35 Support Command		
135 Signal Battalion	St Joseph, Carrolton, Kansas City	Communications support
735 Support Battalion, A Company	Nevada	Fuel support
735 Support Battalion, C Company	Jefferson City, Popular Bluff	Maintenance
735 Support Battalion, D Company	Popular Bluff, Donovan	
735 Support Battalion, E Company	Springfield	Medical support
935 Aviation Support Battalion	Aurora	Aircraft maintenance
35 Rear Operations Center	Kansas City	n/a
70 Troop Command		
175 Military Police Battalion	Fulton	Law enforcement support
1137 Military Police Company	Kennett	Law enforcement support
1138 Military Police Company	Springfield	Law enforcement support
1139 Military Police Company	Harrisonville	Law enforcement support
2175 Military Police Company	Hannibal	Law enforcement support
835 Corps Support Battalion	Jefferson City	
1035 Maintenance Company	Jefferson Barracks	
1221 Transportation Company	Dexter	
711 Transportation Company	Jefferson City	

70 Troop Command (cont.)		
1128 Maintenance Company	Jefferson City	
1129 Maintenance Company	Jefferson City	
135 Military History Detachment	Jefferson City	
70 Public Affairs Detachment	Jefferson City	
205 Medical Battalion	Kansas City	Medical support
135 Rear Operations Center	Kansas City	
Air Guard Assets		
131 Fighter Wing		
Civil Engineer Flight	St. Louis	Engineer and fire protection support
Combat Communications Squadron	St. Louis	Communications support
139 Airlift Wing		
Logistics Group	St. Joseph	
Aircraft Maintenance	St. Joseph	
Security Forces Squadron	St. Joseph	Aircraft security
Air Traffic Control	St. Joseph	
Civil Engineers Squadron	St. Joseph	Engineer and fire protection support
Communications Flight	St. Joseph	Communications support
Aerial Port Flight	St. Joseph	
Airlift Training Center	St. Joseph	
157 Air Operations Group	Jefferson Barracks	Aviation operations
Engineering and Installation Squadron	Jefferson Barracks	Communications support

Notes:

(1) Local units will normally **not** be activated for local disasters (dependant on circumstances). Units will be mobilized from throughout the State to support the disaster.

(2) All Army Guard units have the following equipment in addition to the capabilities identified above:

- Manpower which is trained, well organized and self sustaining.
- Wheeled vehicles of various sizes, capabilities for the transport of people, supplies and equipment.
- Tents of various sizes for use as shelters.
- Generators of various sizes, capabilities for power generation.
- Weaponry with trained personnel for law enforcement assistance.

(3) National Guard unit sizes (in largest to smallest order):

Army Units	Air Units
Division	n/a
Brigade	Wing
Battalion	Group
Company	Squadron
Detachment	Flight

APPENDIX 4

MISSOURI WING CIVIL AIR PATROL CONTACT INFORMATION

This is a restricted document