

ESF-9

SEARCH AND RESCUE

CONTENTS	PAGE
I. PURPOSE	ESF 9.1
II. SITUATIONS AND ASSUMPTIONS	ESF 9.1
A. Situations	ESF 9.1
B. Assumptions	ESF 9.2
III. CONCEPT OF OPERATIONS	ESF 9.2
A. General	ESF 9.2
B. Operational Time Frames	ESF 9.2
IV. ORGANIZATION AND ASSIGNMENT RESPONSIBILITIES	ESF 9.3
A. Primary Agency	ESF 9.3
B. Support Agencies	ESF 9.3
C. State Support Agency	ESF 9.4
D. Federal Support Agency	ESF 9.4
V. DIRECTION AND CONTROL	ESF 9.5
VI. CONTINUITY OF OPERATIONS	ESF 9.6
VII. ADMINISTRATION AND LOGISTICS	ESF 9.6
VIII. ESF DEVELOPMENT AND MAINTENANCE	ESF 9.6
APPENDICES	
1. Activation Lists	ESF 9.8
2. Organizational chart	ESF 9.10
3. Civil Air Patrol Capabilities	ESF 9.11
4. Civil air Patrol Contact Information	ESF 9.12

ESF-9
SEARCH AND RESCUE

PRIMARY AGENCIES: **Greene County Sheriff's Office**
 Springfield Police Department
 Springfield Fire Department

SUPPORT AGENCIES: **Office of Emergency Management** **Rural Fire Protection Districts**
 Municipal Police Departments **Volunteer Agencies**

I. PURPOSE

This plan shall provide the effective use of available resources for Urban and Wilderness Search and Rescue (SAR) missions, and will enable Greene County to satisfy its humanitarian and county wide obligations.

II. SITUATION AND ASSUMPTIONS

A. Situation

1. Authority Having Jurisdiction (AHJ) may retain SAR responsibilities within their boundaries for primarily local incidents.
2. Mutual Aid Agreements are made between the jurisdictions within each county in Region D and the state.
3. Greene County depends on governmental and non-governmental agencies for SAR functions.
4. Local buildings are subject to severe structural damage from all hazards as outlined in the Hazardous Identification Risk Assessment (HIRA), which could result in injury and death to individuals trapped in the damaged structures.
5. In the event of a large structural collapse, elevated numbers of individuals may require rescue services.
6. The mortality rate among trapped victims rises dramatically after 72 hours; therefore, search and rescue operations must be initiated after structures have been evaluated to prevent first responders creating secondary collapse issues.
7. Secondary hazards may compound problems and threaten both disaster victims and rescue personnel.
8. Weather conditions such as rain, temperature extremes, and high winds, may pose additional hazards to disaster victims and rescue personnel.
9. Large-scale emergencies, disasters and acts of terrorism may adversely impact SAR personnel, equipment and facilities as well as communications systems.
10. Individuals may become lost or stranded in urban or wilderness environment and may need SAR resources.

11. The US National Grid (USNG) Coordinates System may be used for special events or to conduct Search and Rescue operations.

B. Assumptions

1. Trained, equipped, organized rescue services will provide the capability to conduct methodical SAR operations, perform a structural damage assessment and shore/stabilize weakened structures, release trapped individuals, and locate the missing and deceased.
2. Access to disaster areas may be limited because of damaged infrastructure.
3. If resources and those obtained pursuant to inter-local agreements/Mutual Aid Agreements are insufficient and additional support is required, assistance may be requested from Region D and the state.
4. During major emergency situations, SAR resources may be damaged and specialized supplies depleted.
5. This SAR function is adequate to deal with most search and rescue situations in the City of Springfield and Greene County, but in an emergency or disaster, augmentation may be required.
6. This plan is solely intended to provide guidance to responders.
7. The incident commander, on scene, through the Emergency Communications Center (ECC) will make the initial determination that a classified emergency exists or is eminent.

III. CONCEPT OF OPERATIONS

A. General

1. The SAR response capabilities are composed of the primary agency that provides SAR operations during reported incidents or potential emergencies requiring a coordinated local response. This includes but is not limited to:
 - a. Structural Collapse
 - b. Waterborne
 - c. Inland and Wilderness
 - d. Aeronautical

B. Actions to be Taken by Operating Time Frames

1. **Mitigation**
 - a. Maintain plans (SOPs and SOGs) to deal various types of Search and Rescue.
2. **Preparedness**
 - a. Train personnel in procedures for the various types of Search and Rescue.
 - b. Maintain mutual aid agreements with agencies.
 - c. Review other ESFs of this plan to determine where support will be needed by other agencies.
 - d. Participate in tests, exercises, and drills.
 - e. Determine if any specialized equipment or training are required to meet potential threats.

3. **Response**
 - a. Respond as required on a priority basis.
 - b. Conduct search and rescue operations.
 - c. Activate local mutual aid and state mutual aid, as needed.
 - d. Report damages observed to include potential problem areas.
 - e. Coordinate activities with other agencies.
 - f. Alert or activate off-duty and auxiliary personnel as required by the emergency.
 - g. Maintain emergency response status until the situation is under control or ordered to stand-down by the EOC.

4. **Recovery**
 - a. Continue operations as necessary until situation returns to normal.
 - b. Release mutual aid and private resources when possible.
 - c. Continue support to other services, especially in the areas of Damage Assessment and Rescue.
 - d. Provide information to Public Information Office (PIO) or if applicable the Joint Information Center (JIC) for news releases..
 - e. Participate in after-action reports and critiques, incorporating recommended changes to plans and procedures.

IV: ORGANIZATION AND ASSIGNMENT OF RESPONSIBILITIES

A. Primary Agencies:

**Greene County Sheriffs Office Springfield Fire Departments
Springfield Police Department**

1. Prioritize the deployment of services based on available resources and critical needs in Greene County or as requested.
2. The Emergency Operations Center (EOC) or Incident Command Post (ICP) shall be kept informed of operations and resource needs.
3. Maintain records of the cost of supplies, resources and staff-hours needed to respond to the SAR incident.
4. Obtains, maintains, and provides incident situation and damage assessment information through established procedures.

B. Support Agencies:

**Office of Emergency Management Volunteer Agencies
Municipal Police Departments Rural Fire Protection Districts**

Office of Emergency Management

1. Monitor radio communications.
2. Provide situation assessment and report facilitation.
3. Provide for the deployment of requested services based on available resources and critical needs.
4. Coordinate communication and resources utilizing the Region D Mobile Communication Vehicle (Skylab).
5. When requested, by the Emergency Communication Center (ECC) or Unified Command (UC), the communications unit shall function as the primary dispatch center for the response.
6. Maintain records of the cost of supplies, resources and staff-hours needed to respond to the SAR incident.

7. Obtains, maintains, and provides incident situation and damage assessment information through Situation Reports (SitReps).
8. Provides filed planning and logistics support and coordination.
9. Utilize the Community Emergency Response Team (CERT) when conditions permit.

Volunteer Agencies

1. Respond to Staging Area or to specific locations as requested.
2. Follow mission assignments as directed.
3. Maintain records of the cost of supplies, resources and staff-hours needed to respond to the SAR incident.
4. Obtains, maintains, and provides incident situation and damage assessment information through Situation Reports (SitReps).

Municipal Police Departments

Rural Fire Protection Districts

1. Prioritize the deployment of services based on available resources and critical needs in unincorporated Greene County or within jurisdictional boundaries until Mutual Aid requests are authorized.
2. The Emergency Operations Center (EOC) or Incident Command Post (ICP) shall be kept informed of operations and resource needs.
3. Maintain records of the cost of supplies, resources and staff-hours needed to respond to the SAR incident.
4. Obtains, maintains, and provides incident situation and damage assessment information through established procedures.

C. State Support Agency

State Emergency Management Agency (SEMA)

1. Monitor initial notification and ongoing situation reports.
2. Authorize incident requests and deploy state resources.

D. Federal Support Agency

Civil Air Patrol

1. Provide aerial reconnaissance for operations.
2. Position responder's liaisons above search areas for visual reconnaissance.
3. Aerial digital imaging with transmission capabilities and Hyper spectral imaging system operation.
4. Communication network capabilities on multiple platforms.
5. Maintain records of the cost of supplies, resources and staff-hours needed to respond to the SAR incident.
6. Obtains, maintains, and provides incident situation and damage assessment information through Situation Reports (SitReps).

V. DIRECTION AND CONTROL

- A. Department heads will continue to maintain operational control of their own communications systems and will coordinate with the EOC during SAR operations. All departments shall become familiar with the procedures outlined in this ESF.
- B. Communications used to support SAR operations will remain under the direct control of the sponsoring organization.
- C. Each Agency responsible for operations under this Plan will:
 - 1. Keep information readily available on the status of key SAR assets or other resources which may be needed for operations; and
 - 2. Keep each other fully and promptly informed of operations of mutual interest, or which may involve use of equipment of another Participant(s).
 - 3. Most if not all SAR on-scene coordination may be delegated to any appropriate local, county or state agency already on scene.
- D. Participant(s) with operational responsibilities should develop plans and procedures for effective use of available SAR assets and for contingencies to continue SAR operations if staffing are withdrawn because of another emergency or a change in missions.
- E. SAR operations shall normally continue until reasonable hope of rescuing survivors has passed.
- F. If an operation on-scene becomes unsafe for responders and the appropriate authority concludes that survivors might still be alive, it may temporarily suspend the on-scene activities pending further developments, and shall promptly so inform any authority, facility or service which has been activated or notified. Information subsequently received shall be evaluated and operations resumed when justified on the basis of such information.
- G. When the appropriate authority has considered, that the rescue operation has been successful, or that the emergency no longer exists, it shall terminate the operation and start the demobilization process for the activated response teams.
- H. The regional Mobile Communications Vehicle (Skylab) will provide backup support communications.
 - 1. **Agency participation shall:**
 - a. Apply the most effective systems to save the most lives at the least operational risk and cost.
 - b. Utilize technical, administrative and information systems, which will improve the ability of the Participant(s) and associated non-governmental organizations to carry out SAR responsibilities.
 - c. Each participant(s) managerial, operational, and support personnel shall strive towards maximizing operational effectiveness.
 - d. Encourage development and proficiency in SAR techniques and procedures by other agencies participating in SAR, and assist these other agencies as appropriate;
 - e. Encourage continued development of local, state and federal SAR facilities and assets as appropriate; and

- f. Enter into agreements, as appropriate, with local, state and federal government and state and federal military assets to provide for the fullest practicable cooperation in SAR consistent with their capabilities and resources, and to aid in the account for use of federal facilities for SAR missions.

I. Priority goals of the agencies shall include:

1. Unified Command (UC) with primary response agencies on-scene and to coordinate response and recovery efforts with local, county and state Participant(s);
2. Provide communications systems which are highly reliable, interoperable, and functionally effective as possible (interoperable radios, cross-band repeaters, Regional Communication Repeater Trailers and Region "D" Communication Vehicle); and
3. Ensure SAR personnel are provided quality training, equipment, procedures, facilities, information, and other tools necessary to conduct SAR operations in a consistent, highly professional, and effective manner.

VI CONTINUITY OF OPERATIONS

The key purpose of Continuity of Operations planning is to provide a framework for the continued operation of critical functions. When implemented, these plans will determine response, recovery, resumption, and restoration of Department/Agency services.

COOP Plans for the Departments/Agencies present a manageable framework, establish operational procedures to sustain essential activities if normal operations are not feasible, and guide the restoration of the critical functions of the Department/Agencies functions. The plan provides for attaining operational capability within 12 hours and sustaining operations for 30 days or longer in the event of a catastrophic event or an emergency affecting the department.

VII. ADMINISTRATION AND LOGISTICS

A. Administration

1. Required Lists:
 - a. Mutual Aid Agreements (all departments).
 - b. Memorandums of Understanding (private organizations).
 - c. Notification lists for all departments to include each individual in the chain of command.
2. Training requirements.
3. Record keeping and accounting procedures in accordance with local guidelines.

B. Logistics

1. Facilities and equipment: A list of the EOC's communications equipment is maintained by OEM, as well as other communications equipment that may become available during an emergency/disaster.

VIII. ESF DEVELOPMENT AND MAINTENANCE

The Office of Emergency Management will be responsible for the maintenance and improvement of this ESF. It will be reviewed, updated, and modified as necessary, but not less than annually.

ESF-9
SEARCH AND RESCUE
APPEDICIES

<u>CONTENTS</u>	<u>PAGE</u>
APPENDIX 1: Activation List	ESF 9.8
APPENDIX 2: Organizational Chart	ESF 9.10
APPENDIX 3: Civil Air Patrol Capabilities	ESF 9.11
APPENDIX 4: Missouri Wing Civil Air Patrol Contact Information	ESF 9.12

APPENDIX 1
ACTIVATION LIST

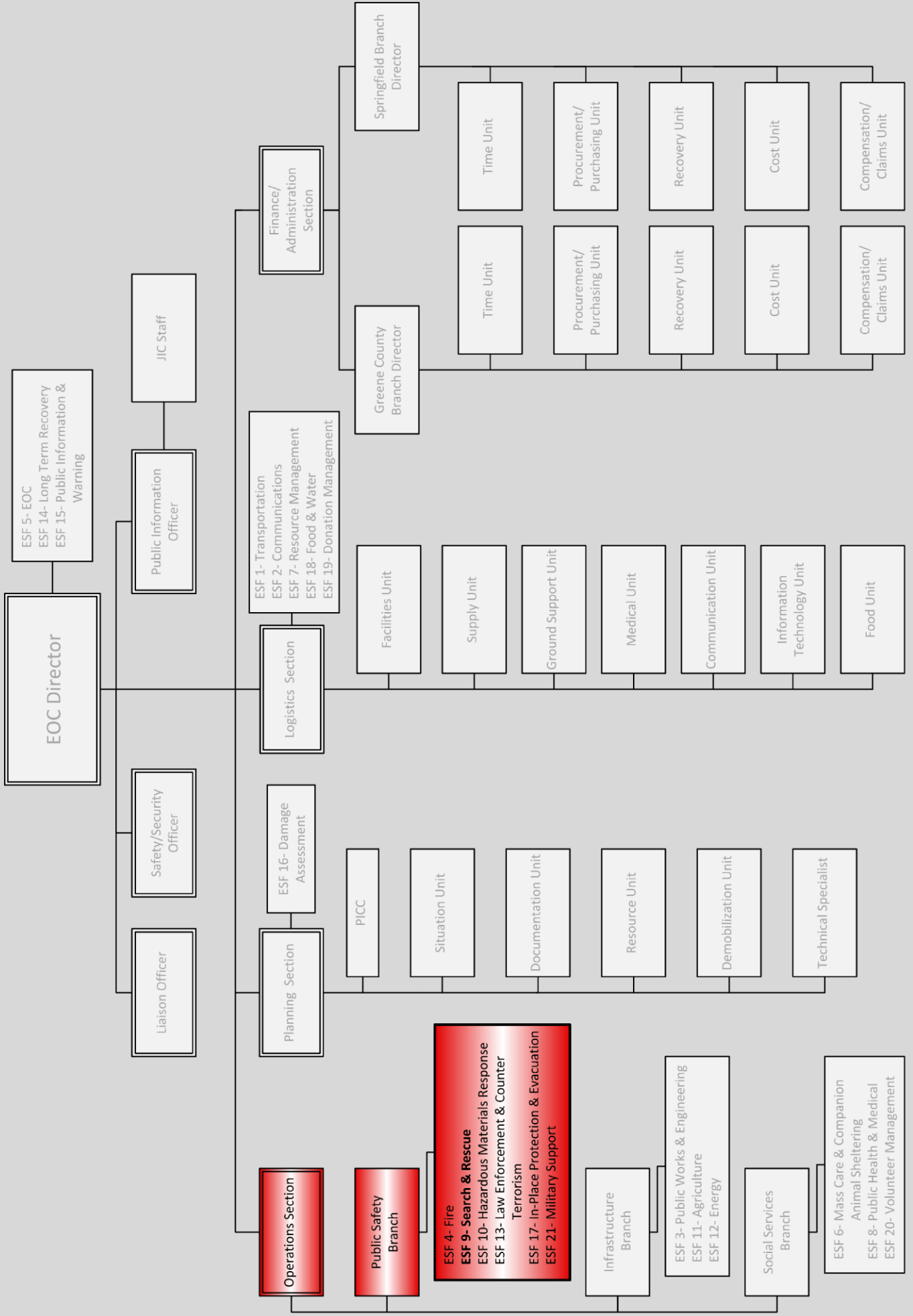
This is a restricted document

**APPENDIX 1
ACTIVATION LIST (cont.)**

RURAL FIRE DISTRICTS (cont.)

This is a restricted document

APPENDIX 2 ORGANIZATIONAL CHART



APPENDIX 3

CIVIL AIR PATROL CAPABILITES

- Provide 24-hour staffing (liaison) upon request from the EOC to SEMA.
- Provide aerial missions such as reconnaissance to search for victims, damage assessment, or environmental surveys utilizing visual, photographic, digital and video techniques.
- Provide airborne communications support.
- Provide radio communications-mobile or fixed locations.
- Provide airlift (subject to regulatory restrictions).
- Provide manual labor (e.g. filling sandbags for flood control).
- Provide ground teams (typically used in search and rescue (SAR) missions. Ground teams may be used for house to house health and welfare checks and inventory and damage assessment. Ground teams are prohibited from participating in Counter drug or law enforcement missions.

APPENDIX 4

MISSOURI WING CIVIL AIR PATROL CONTACT INFORMATION

This is a restricted document