

NOTICE IS HEREBY GIVEN THAT THE GREENE COUNTY PLANNING BOARD will hold a public hearing on TUESDAY, SEPTEMBER 15, 2009 at 7:00 p.m. at 940 Boonville, Room 212, Springfield, Missouri. If this hearing should last until 11:00 p.m. the Planning Board may recess the hearing until another night to allow sufficient time for review of all requests. Unless tabled or withdrawn, this case will be heard by the Board of Adjustment on TUESDAY, OCTOBER 13, 2009 at 9:30 a.m. In accordance with ADA guidelines, if you need special accommodations when attending any County meeting, please notify this office at least three (3) days prior to the meeting. Information may be examined at the Planning Office, 940 Boonville, Room 305, between the hours of 8:00 a.m. and 5:00 p.m., Monday through Friday. Telephone: (417) 868-4005.

BOARD OF ADJUSTMENT CASE NO. 1486

**REQUEST: CONDITIONAL USE PERMIT TO ALLOW THE EXPANSION OF
A CHURCH IN AN A-1, AGRICULTURE DISTRICT**

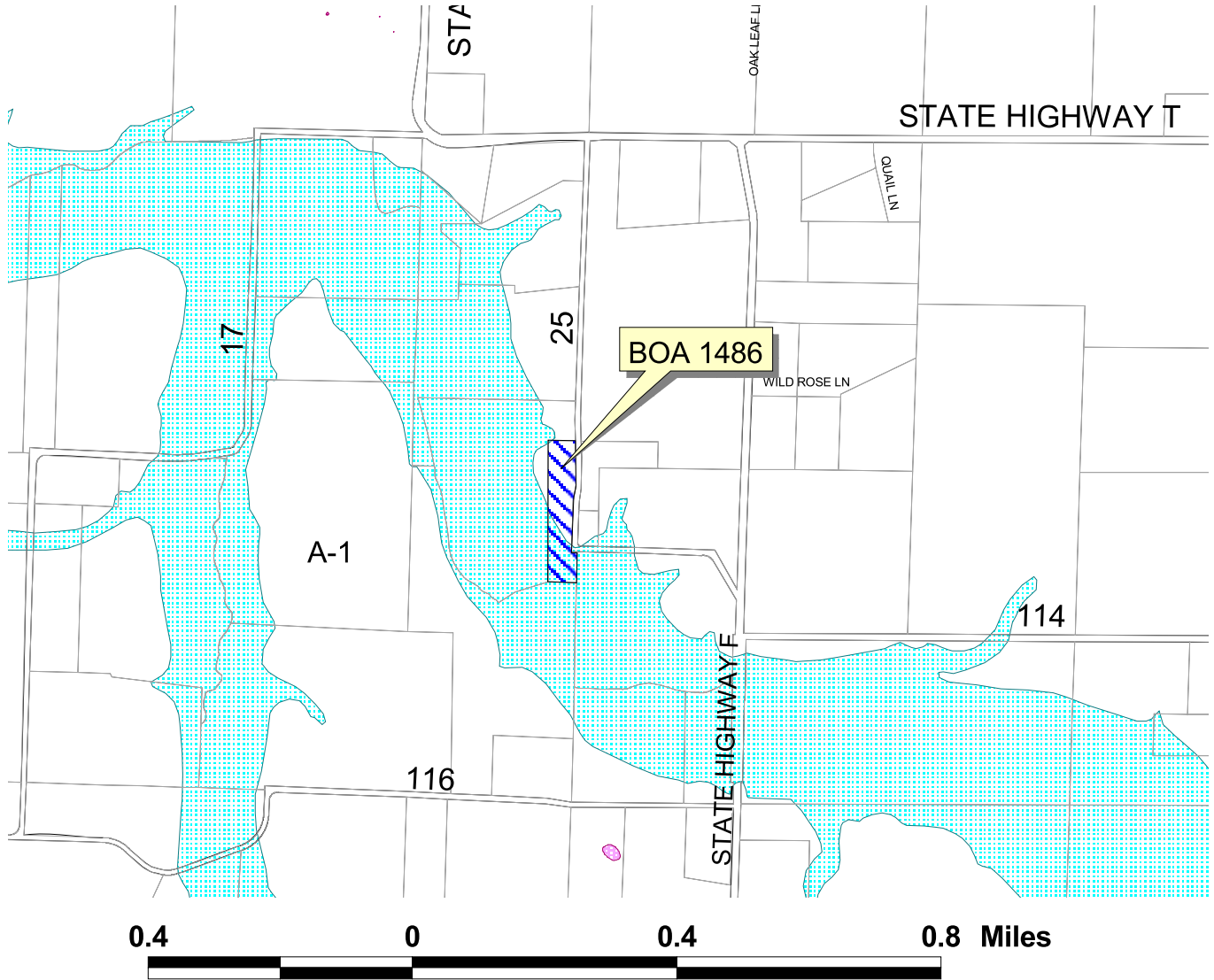
**LEGAL: 5.13A SE COR LOT 1 NE ¼ & N 900 FT M/L E 220 FT M/L NE ¼
SE ¼ 6/29/24 (EX RD)**

LOCATION: 2775 N. FARM ROAD 25, ASH GROVE, MISSOURI

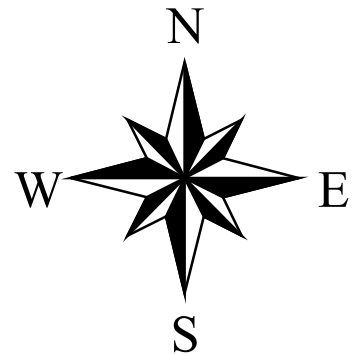
**Kent D. Morris, AICP, Executive Secretary
Greene County Planning Board**

**APPLICANT: JOHN'S CHAPEL CEMETERY ASSOCIATION
c/o BRYAN D. RAGSDALE, ARCHITECT**

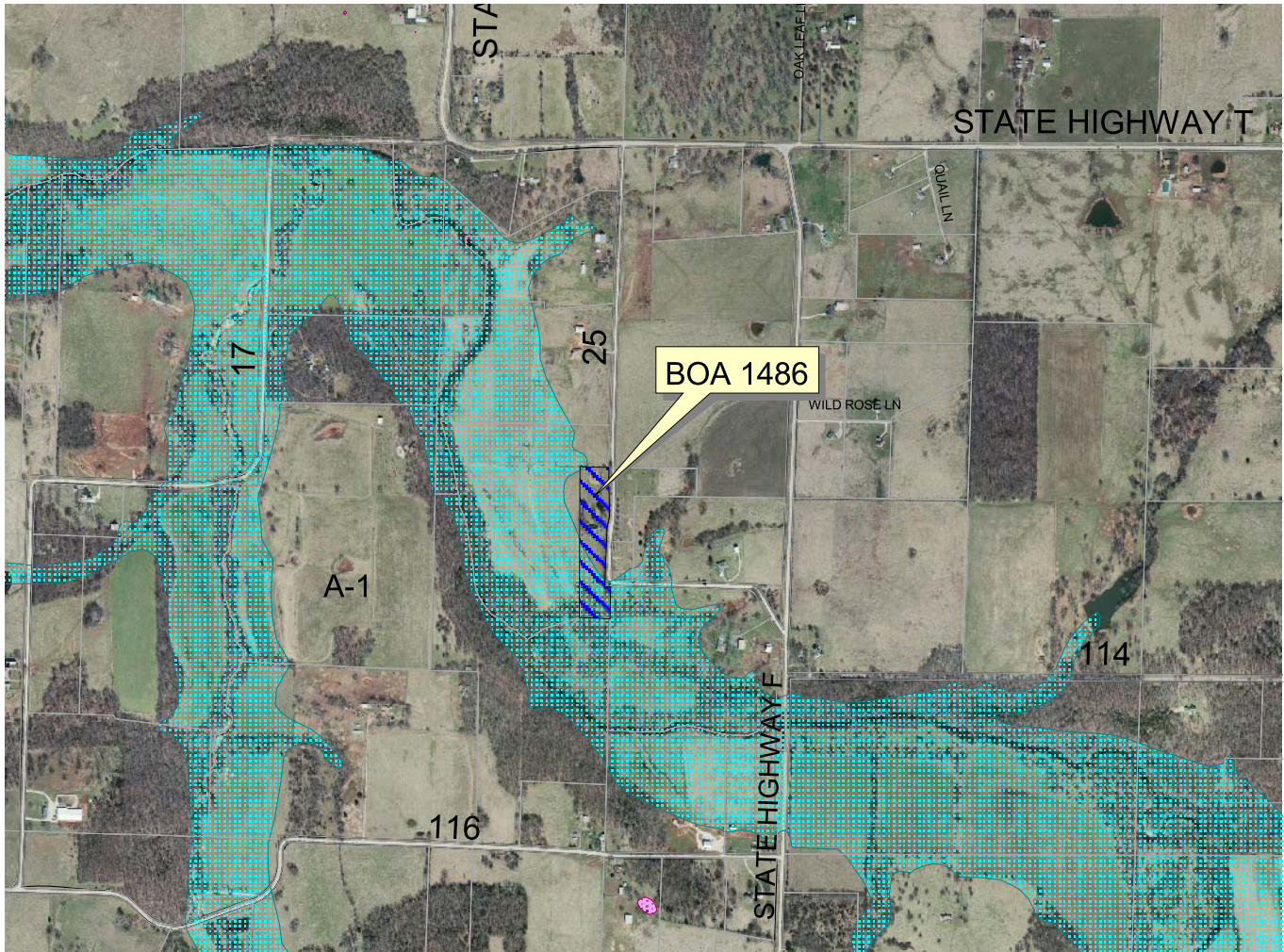
Board of Adjustment Case 1486



Applicant: John's Chapel Cemetery Association
c/o Bryan D. Ragsdale, Architect
Request: Conditional Use Permit to allow the expansion
of a church in an A-1, Agriculture District
Tract size: 5.13 acres
Location: 2775 N. Farm Road 25, Ash Grove
First hearing date: September 15, 2009



Board of Adjustment Case 1486



Applicant: John's Chapel Cemetery Association
c/o Bryan D. Ragsdale, Architect
Request: Conditional Use Permit to allow the expansion
of a church in an A-1, Agriculture District
Tract size: 5.13 acres
Location: 2775 N. Farm Road 25, Ash Grove
First hearing date: September 15, 2009

