

**NOTICE IS HEREBY GIVEN THAT THE GREENE COUNTY PLANNING BOARD will hold a public hearing on TUESDAY, NOVEMBER 17, 2009 at 7:00 p.m. at 940 Boonville, Room 212, Springfield, Missouri. If this hearing should last until 11:00 p.m. the Planning Board may recess the hearing until another night to allow sufficient time for review of all requests. Unless tabled or withdrawn, this case will be heard by the Board of Adjustment on TUESDAY, DECEMBER 8, 2009 at 9:30 a.m. In accordance with ADA guidelines, if you need special accommodations when attending any County meeting, please notify this office at least three (3) days prior to the meeting. Information may be examined at the Planning Office, 940 Boonville, Room 305, between the hours of 8:00 a.m. and 5:00 p.m., Monday through Friday. Telephone: (417) 868-4005.**

**BOARD OF ADJUSTMENT CASE NO. 1491**

**REQUEST: CONDITIONAL USE PERMIT TO EXPAND A COMMERCIAL QUARRY IN THE A-1, AGRICULTURE DISTRICT.**

**LEGAL: THE NORTH ONE-HALF (N1/2) OF THE SOUTHEAST QUARTER (SE1/4) OF SECTION THIRTY (30), TOWNSHIP THIRTY (30), RANGE TWENTY-TWO (22), IN GREENE COUNTY, MISSOURI**

**AND THE NORTH ONE-HALF (1/2) OF LOT 1 OF THE SOUTHWEST QUARTER (SW ¼) OF SECTION 30, TOWNSHIP 30 NORTH, RANGE 22 WEST IN GREENE COUNTY, MISSOURI, CONTAINING TWENTY (20) ACRES, MORE OR LESS.**

**LOCATION: 5425 N. HORSE CREEK LN. AND 5299 N. FARM ROAD 113, SPRINGFIELD, MO 65803**

---

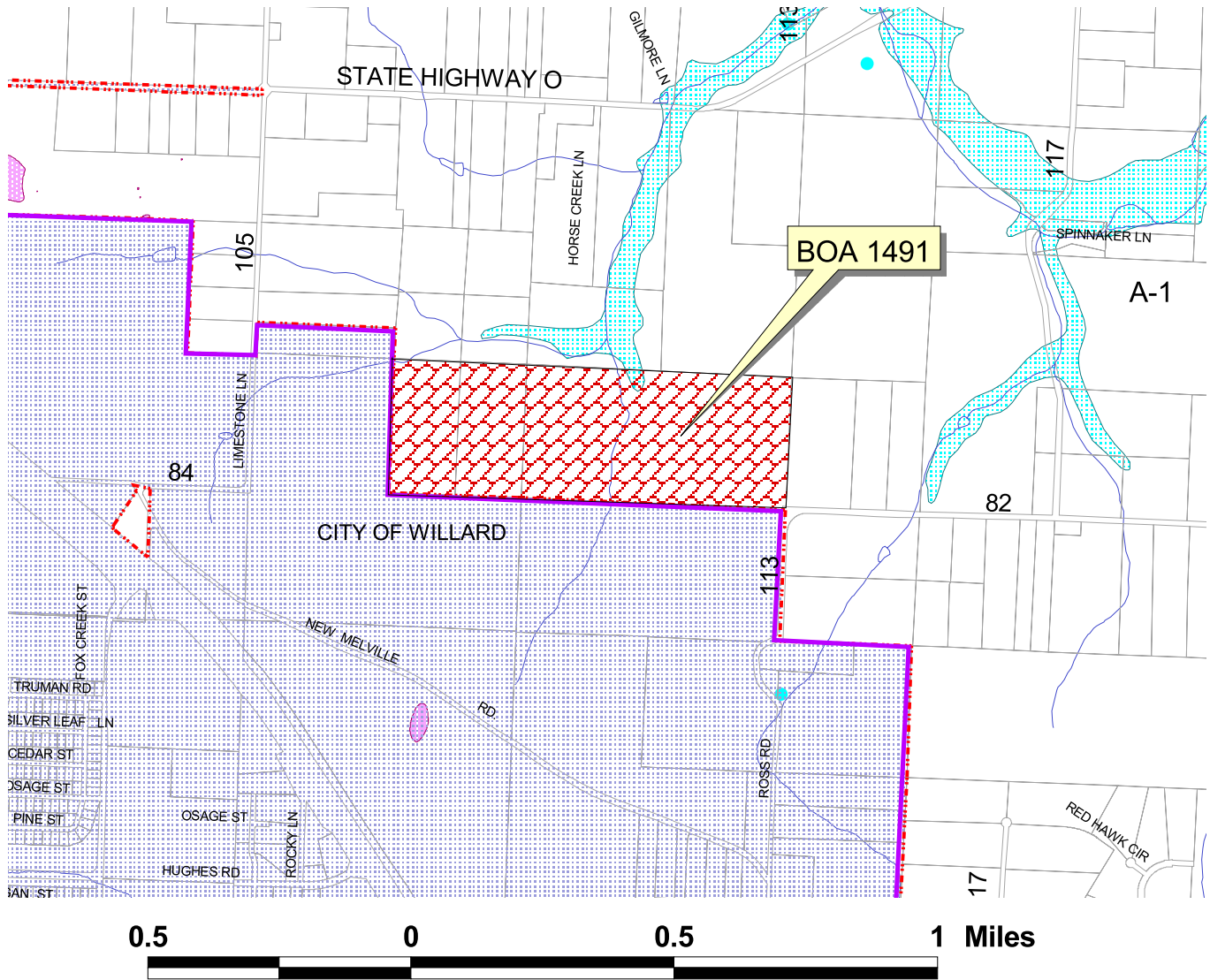
**Kent D. Morris, AICP, Executive Secretary  
Greene County Planning Board**

**ADVERTISE ON OR BEFORE: OCTOBER 26, 2009**

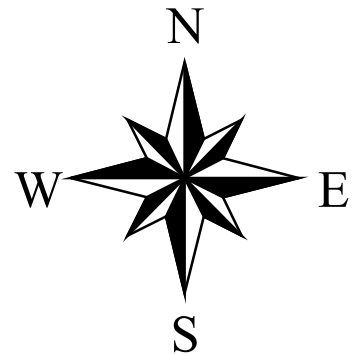
Bill and send proof of publication to applicant:  
Greene County Planning & Zoning  
940 Boonville, Room 305  
Springfield, MO 65802  
Telephone: (417) 868-4015

Copy of proof of publication to:  
Conco Quarries, Inc. c/o Kevin Lowe Olson Associates  
1525 E. Republic Road Building B, Suite 100  
Springfield, MO 65804  
417-890-8802

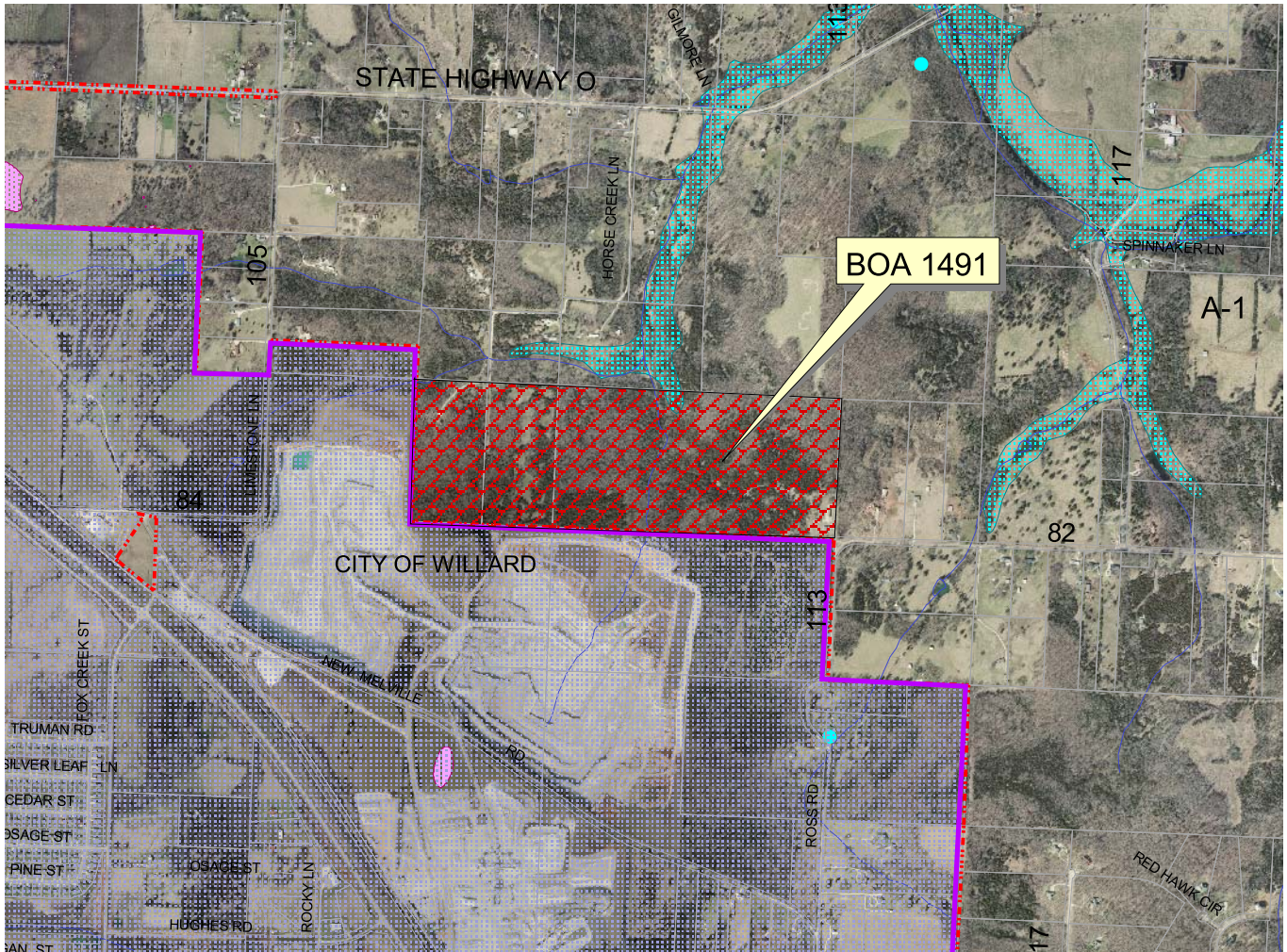
# Board of Adjustment Case 1491



Applicant: Conco Quarries, Inc. c/o Kevin Lowe  
of Olsson Associates  
Request: Conditional Use Permit to allow the expansion  
of a commercial quarry  
Tract size: 120 acres  
Location: 5299 N. Farm Road 113, Springfield  
First hearing date: November 17, 2009



# Board of Adjustment Case 1491



Applicant: Conco Quarries, Inc. c/o Kevin Lowe  
of Olsson Associates  
Request: Conditional Use Permit to allow the expansion  
of a commercial quarry  
Tract size: 120 acres  
Location: 5299 N. Farm Road 113, Springfield  
First hearing date: November 17, 2009

